



e-xpert lite

High precision battery monitor

Description | Operating your battery bank without good metering is like running your car without any gauges, although possible to do, it's always better to know how much fuel is left in the tank. Defining the amount of energy available in a battery is a complex task since battery age, discharge current and many other factors influence the actual battery capacity. The e-xpert lite uses the same very accurate measurement and calculation systems as the high-end e-xpert pro.

The e-xpert lite selectively displays voltage, charge- and discharge current, consumed amhours and remaining battery capacity. Using a clear backlit LCD and an intuitive user interface, all parameters can be recalled with just a button press. A second battery input is also provided to monitor an auxiliary battery. A large bargraph delivers instant state of charge information.

Compared to the e-xpert pro, the e-xpert lite is a more basic instrument, perfectly suited for users focused on accurate state of charge readout and very easy setup.

The e-xpert lite comes standard with a 500 Amp shunt and a very clear installation and operating instruction manual.

Features

- Read your battery bank like a fuel gauge
- Provides critical information about the status of your battery bank
- Displays voltage, current, consumed amhours and remaining battery capacity
- Two battery inputs
- Large display with backlight
- Quick nut mounting construction
- Programmable alarm relay
- Shunt selection capability, enables flexible system integration
- Autosensing battery voltage inputs
- Splash proof frontpanel
- 500 Amp shunt included
- CE and e-mark certified
- 24 month warranty

Applications

- Marine applications
- Solar power systems
- Recreational vehicles
- Mobile entertainment systems
- Service vehicles
- Industrial systems
- Remote homes

Accessories

- Professional connection kit
- Quick connection kit

| Parameter | e-xpert lite | |
|--|--|---------|
| Supply voltage range | 9..35VDC | |
| Supply current ¹⁾ : | @Vin=24VDC | 7mA |
| | @Vin=12VDC | 9mA |
| Input voltage range (auxiliary battery) | 2..35VDC | |
| Input voltage range (main battery) | 0..35VDC | |
| Input current range ²⁾ | -999..+999A | |
| Battery capacity range | 20..999Ah | |
| Operating temperature range | -20..+50°C | |
| Storage temperature range | -30..+70°C | |
| Readout resolution : | voltage (0..35V) | ± 0.1V |
| | current (0..100A) | ± 0.1A |
| | current (100..999A) | ± 1A |
| | amphours (0..100Ah) | ± 0.1Ah |
| | amphours (100..999Ah) | ± 1Ah |
| | state-of-charge (0..100%) | ± 0.1% |
| Voltage measurement accuracy | ± 0.5% | |
| Current measurement accuracy | ± 0.8% | |
| Meter dimensions | Ø64mm (front diameter) / Ø52mm (body diameter) / 79mm (depth) | |
| Meter weight | 95gr | |
| Shunt dimensions (length x width x height) | 87 x 45 x 35mm | |
| Shunt weight | 145gr | |
| Protection class | IP20 (frontpanel only IP65) | |
| Standards | CE marked meeting EMC directive 2004/108/EC and LVD 2006/95/EC complying with EN60335-1, RoHS 2002/95/EC and e4-95/54/EC | |

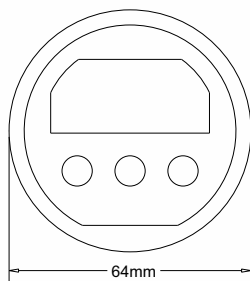
Note: the given specifications are subject to change without notice.

¹⁾ Measured with backlight and alarm relay turned off

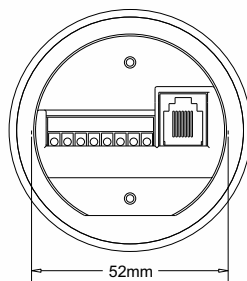
²⁾ Depends on selected shunt. With standard delivered 500A/50mV shunt (350A continuous), the range is limited to -600..+600A

Dimensions

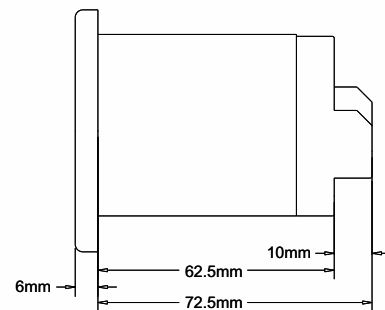
Front view



Rear view



Side view



Mounting sequence

